



**BAS Fortnightly Newsletter**  
**Timely Advice and Current News**



[CEO Notes](#)

[Blue Tongue Update](#)

[Advanced Alpaca Assessment](#)

[National Show Update](#)

[Registering Alpacas/ Entering Alpacas in a Show](#)

[Payments - change of terms](#)

[SWRAG Webinar](#)

[BCVS statement on care](#)

[Peru Tour 2024](#)

[2023 Event Diary](#)

[Show Diary](#)



## CEO Notes

**It is a bumper newsletter this week so make sure you scroll all the way down!!**

### **Dog Attacks**

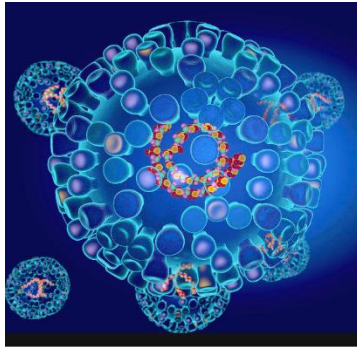
An alpaca in Devon was attacked by Stag Hounds in early January and sadly had to be euthanised because it had severe injuries.

If your animals are subject to a dog attack then, depending on what is happening, you should:

1. Stop the attack by any reasonable means
2. Call the vet to treat any injuries
3. Collect evidence – take pictures, “arrest” the dog if possible.
4. Take contact details from the dog owner, if present, and witnesses if there are any.
5. Report the incident to the police
6. Tell BAS so that we can collate the information.

*Duncan Pullar*

BAS CEO 07496 578781



## Blue Tongue Update

All alpaca owners within the TCZs (Norfolk and Kent) must not move their animals under any circumstances without a movement licence which can take up to 8 days to be issued. - vet visits are excluded except in exceptional circumstances where surgery may be required as an example.

Here is the link to the BTV info <https://ruminanthw.org.uk/bluetongue-virus/>

Note next online meeting 24/1/24 6-7.30pm which requires prebooking online

Previous info is available on demand at

<https://ruminanthw.org.uk/bluetongue-virus/#EventsandWebinars>

### Defra Update 15 January 2024

Following active surveillance in the [north-east Kent temporary control zone \(TCZ\)](#), one further case of bluetongue in sheep has been identified on a premises near Aylesham in the existing TCZ.

The positive animal will be humanely culled to minimise the risk of onward transmission. The TCZ is not being extended and movement restrictions continue to apply to cattle, sheep, deer, camelids and other ruminants in the zone.

### Defra Update 12 January 2024

Following active surveillance in the [Norfolk TCZ](#), one further case of bluetongue in cattle has been identified on a premises near Limpenhoe in the existing TCZ.

### **Defra Update 11 January 2024**

Following active surveillance in the [Norfolk TCZ](#), one further case of bluetongue in cattle has been identified on a premises near Limpenhoe in the existing TCZ.

**Find [details of all bluetongue disease control zones in England](#), including rules you must follow in these areas.**

Bluetongue has been reported in a number of European countries. Go to the current [outbreak assessments](#) and the [topical issues page](#) for more detail.



## **Advanced Alpaca Assessment**

The next Advanced Alpaca Assessment course is now scheduled for Sat 16th and Sun 17th of November 2024 at CS Alpacas (near Aylesbury).

The tutors are Jay Holland and Tim Hey.

If you would like to attend please let Duncan know by email [ceo@bas-uk.com](mailto:ceo@bas-uk.com)



## National Show Update

### The Halter Show

**Organiser: Barbara Hetherington** [barbara@beckbrowalpacas.co.uk](mailto:barbara@beckbrowalpacas.co.uk)

The next step will be adding named entries to the approaching 600 places reserved at the show. Confirmation of the actual alpacas in your show team should be made on Grassroots.

A note on **Progeny Groups** – these are not counted as part of your block booking allocation. Sire and Dam Progeny Groups can be entered with your named entries in February. Sire's Progeny Groups can also be entered at the show (by 12 noon Saturday) but **Dam's progeny MUST be entered in your named entries.**

**Key dates:** Named Entries Open Mon 29<sup>th</sup> January to midnight Sun 4<sup>th</sup> February

**Remember to register your cria, check your microchips & colours**

Before you complete your named entries, you'll need to have registered any 2023 cria that you want to bring to the show on Grassroots as usual, including making the necessary payment. It's also a good idea to check the microchips and registered colours for all alpacas in the show team to make sure they are still correct on the registry. If you need to make any changes, please do so as soon as possible as this helps to get the catalogue correct and makes a huge difference when checking your alpacas in at the show.

## The Champion of Champions Fleece Show

**Organiser:** Julia Corrigan-Stuart [julia@csalpacas.co.uk](mailto:julia@csalpacas.co.uk)

Entries are now closed and fleeces are already arriving for the judging – thanks to all those that have already sent them in.

**Key dates:** Fleeces need to be delivered to Julia at CS Alpacas no later than 6pm on Monday 22nd January.

Judging takes place on Sat 24th February & results are announced at the National Show in March

## The Stud Auction



**Organisers:**

**Harley Laver** [harley@churchfieldalpacas.co.uk](mailto:harley@churchfieldalpacas.co.uk) and **Barbara Hetherington**

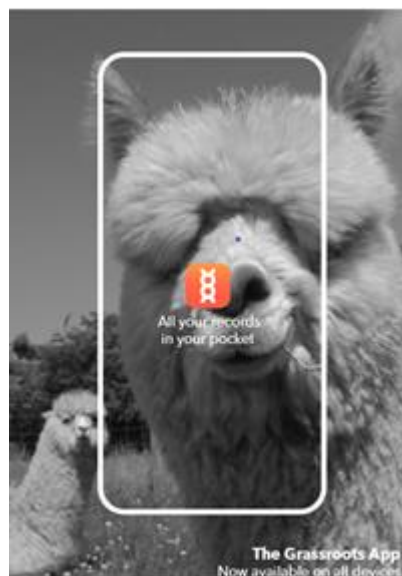
[barbara@beckbrowalpacas.co.uk](mailto:barbara@beckbrowalpacas.co.uk)

Everything is set up for the auction with 32 great studs. Many thanks to all the breeders who have donated a drive by stud service from each of them. Please visit

the Stud Auction page of the website to see all the details and plan your bids:

<http://basnationalshow.co.uk/studs/>

**Key dates:** Auction starts Mon 29th January for 4 weeks



## Registering alpacas/ Entering alpacas in a Show

**NOTE FOR ALL MEMBERS** - if you have used a male for breeding and have cria due to be born, or on the ground, you **MUST** get that male fully registered if you want to register the cria.

This includes the requirement to provide a DNA sample, which can be a blood spot or two nasal swabs. You can apply to register a previously notified male in the Online Registry. Please note: Cria **CANNOT** be registered until their sire is fully registered.

**SHOWING MEMBERS** - Please check **NOW** that any alpacas you might want to

include in a show team are Registered, or Birth Notified for young males. It is not always possible to get animals registered and into a show on the closing date. Please don't leave it until the last minute.



## Payments - change of terms

The Board have instructed Grassroots that in 2024, applications for registration, transfers, DNA and Show entries should not be processed until payment has been received.

If you log into the Online Registry, on the landing page there is a panel on the left called My Membership. That confirms your current payment method.

If you are a **"Direct Debit Everything"** person no action is required. All your applications will be processed as soon as possible, and funds will be collected at the



end of each month as they are now.

If you are a "**Direct Debit subscription**" person, it means that your subs will be collected at the discounted rate on 1<sup>st</sup> April, but that all other fees are collected manually. If you could please send an email to [pedigree@grassroots.co.uk](mailto:pedigree@grassroots.co.uk) to say: Please use my direct debit mandate to collect all BAS fees. This will mean that:

- When you use the Online Registry, you will be taken to the shopping basket to confirm the tally, but no payment will be requested.
- Grassroots will process your applications as soon as possible, and send you an invoice for information only, no action required
- At the end of the month you will receive a statement confirming the funds to be collected
- Finally you will be sent a VAT receipt.

If you do not send this instruction you must pay for all applications as you go along, via the Shopping basket. You can pay by Stripe using a credit or debit card, by direct bank transfer or by cheque made payable to British Alpaca Society.

If you are a "**Manual Payer**" – please do consider signing a direct debit mandate. This will give you a £10 per year discount on your membership and mean that all your applications can be processed as soon as they are received. To obtain a form please email [pedigree@grassroots.co.uk](mailto:pedigree@grassroots.co.uk)

If you are a Manual Payer and do not sign a direct debit form, you must pay for all applications as you go along, via the Shopping basket. You can pay by Stripe using a credit or debit card, by direct bank transfer or by cheque made payable to British Alpaca Society. PayPal is still an option but will be phased out because the commission is high compared to other options.



## **SWRAG Webinar**

**A fantastic webinar coming very soon, run by SWRAG**

*\*\* A Trek Through Our Alpaca Experience and What We Have Learned Along the Way*

***By Doug Steen. \*\****

Join us for a South Wales Regional Alpaca Group event

**A WEBINAR on Tuesday the 23rd January 2024 at 7.00pm**

Open to all in Wales and outside.

Free for SWRAG members and £5 for others

This will be a fascinating tour with someone who has, over the years, developed an incredible wealth of knowledge on Alpacas and Llamas. Doug has had alpacas at his farm, Teesdale Alpacas, since 2007. He has been on the BAS board for a number of years and advised about alpaca welfare. He has also been awarded the Benavides trophy for his work on camelid welfare by the combined camelid organisations BAS, BLS and BCL .

Many of you will have seen Doug's responses to questions on Social Media like Alpaca Chat UK where he is very generous with his experience and expertise. This is a great opportunity to be inspired, informed and to ask any questions that you might have of someone with such a breadth of experience.

To join us for the Webinar or to become a member of SWRAG (£20 per year) please go to our website <https://swrag.org/swrag-events/>

For any questions or for an alternative method of booking please contact [admin@swrag.org](mailto:admin@swrag.org) or Tanya at 07711340658



## **BCVS statement on care by lay persons**

The BCVS have asked BAs to bring to the attention of members some issues relating to the care of alpacas,

The full statement can be found by following the link below .

Issues covered are:

- Dental Care
- Castration
- Administration of medicines
- Shearing injuries

<https://bas-uk.com/wp-content/uploads/2024/01/BVCS-Statement-on-layperson-procedures.pdf>



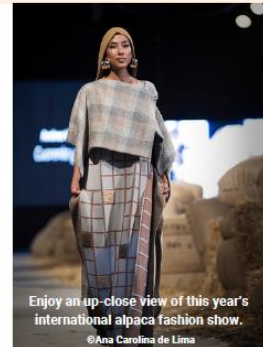
# Peru TOUR 2024



OCTOBER 22 - NOVEMBER 04

## International Alpaca Fiesta

- **What?** Our tour starts this year with the International Alpaca Fiesta in Arequipa, Peru, October 23-25, 2024.
- **Cost?** The entrance fee for the Fiesta has not been announced as of the date of this publication. Sign up below to receive updates.
- **Why?** Quechua Benefit's tour leaders, Mike Safley, Dale Cantwell and esteemed international alpaca judge Amanda VandenBosch, have been doing Peru tours for more than a decade, we know the best hotels, restaurants, the most unique itinerary and shopping. Join our experienced and knowledgeable guides for the ultimate experience!
- **Tax Donation:** \$2,000 dollars of your \$4,500 trip fee is a tax-deductible donation to Quechua Benefit. All Peru tour profits go to Quechua Benefit and the guides volunteer their time.
- **More Information:** please send an email to [peru-tour@quechuabenefit.org](mailto:peru-tour@quechuabenefit.org) or visit [quechuabenefit.org/peru-tour](http://quechuabenefit.org/peru-tour) to sign up or receive updates. You can always call Amanda @ 831.809.1147, Dale @ 303.902.4503 or Mike @ 503.703.6020 [mike@alpacas.com](mailto:mike@alpacas.com).



Enjoy an up-close view of this year's international alpaca fashion show.

©Ana Carolina de Lima



See touch and feel Peru's finest, Suri and Huacaya at the International Alpaca Fiesta Competition



Casa Chapi Kids November 2023



Chaccu - Picotani - April 2019

## PERU TOUR continues

- **Continue your Peru Tour** with a visit to the beautiful Colca Canyon Condor Cross and watch the majestic Colca Canyon Condor's take flight.
- **Tour the Casa Chapi Children's Village** and have lunch with the kids while they share their learned skills of reading, singing and dancing as they express their gratitude for your generosity.
- **Hike into the ancient caves** at Sumbay and see the 5,000-year-old cave paintings depicting the domestication of the first alpacas.
- **Participate in the sacred Vicuña Chaccu** and help round up 1,000's of vicuna, watch them being shorn, and released. See their fleeces sorted, spun and made into handicrafts for you to bring home
- **Explore Cuzco**, the capital city of the Incan Empire, shopping and visiting with Peruvian weavers and artisan.
- **Extend your tour** for 4 additional nights and explore the Sacred Valley before continuing on to Machu Picchu, Lost City of the Incas and one of the Seven Natural Wonders of the World. Choose to stay in the park overnight for an unforgettable experience

Visit [quechubenefit.org/Peru-Tour](http://quechubenefit.org/Peru-Tour) to see a complete itinerary and to RSVP for the tour.



# Peru TOUR

2024

**\$4,500**

- Tuesday Oct. 22 Leave Home, Fly to Peru
- Wednesday Oct. 23 Arequipa Activities & Alpaca Fiesta (*entrance fee not included in trip fee*), Opening Dinner, Overnight Arequipa
- Thursday Oct. 24 Arequipa Activities & Alpaca Fiesta (*entrance fee not included in trip fee*), Overnight Arequipa
- Friday Oct. 25 Arequipa Activities & Alpaca Fiesta (*entrance fee not included in trip fee*), Overnight Arequipa
- Saturday Oct. 26 Travel to Chivay (4hrs), Visit Sumbay Cave Paintings, Lunch & Casa Chapi Celebration, Overnight Colca
- Sunday Oct. 27 Condor Cross, Lunch, Travel to Putina (7hrs), Overnight Putina
- Monday Oct. 28 Picotani Vicuna Chaccu, shopping for vicuna and alpaca handicrafts, Overnight Putina
- Tuesday Oct. 29 Travel to Cusco (7hrs), Cusco Free time, Overnight Cusco
- Wednesday Oct. 30 Cusco City Tour, Cusco Shopping & Cusco Celebration Dinner, Overnight Cusco
- Thursday Oct. 31 Cusco Free time, Fly to Lima, then back home
- Sacred Valley & Machu Picchu Option +\$1,500**
- Thursday Oct. 31 Travel to Sacred Valley (2hrs), Calca textile spinning/dyeing and Pacha Mama lunch, or Moray archeological site & Inka Salt Mines, Overnight Ollantaytambo
- Friday Nov. 1 Ollantaytambo tour morning, lunch, afternoon train to Machu Picchu, Overnight Aguas Calientes (Option for Sanctuary Lodge \$900 Extra includes early access to Machu Picchu, breakfast, lunch & dinner)
- Saturday Nov. 2 Visit Machu Picchu, optional hike to Machu Picchu Mountain, Train and bus back to Cusco, Overnight Cusco
- Sunday Nov. 3 Visit sites outside Cusco (Saqsayhuama, Qenqo & Tambomachay) Overnight Cusco. Optional 1 hour hike on Inca Trail into Cusco
- Monday Nov. 4 Cusco Free time, Fly to Lima, then back home

- Expertly guided by Peru Tour veterans: Amanda VandenBosch, Mike Safley & Dale Cantwell.
- **\$2000 of your trip fee is a U.S. tax deductible donation to Quechua Benefit.**
- Includes hotels (double occupancy) and ground transportation.
- Machu Picchu option includes local guides, park entry fees, and interpreters as needed.

Visit [QuechuaBenefit.org/peru-tour/](http://QuechuaBenefit.org/peru-tour/) to RSVP.

Alternatively, contact Mike Safley (503) 703 6020 / Amanda VandenBosch (831) 809 1147 or Dale Cantwell (303) 902 4503

## 2023 Event Diary



If you need information about any of the events listed below then please email Duncan using [ceo@bas-uk.com](mailto:ceo@bas-uk.com) or go to the BAS website.

Full listing of all affiliate courses available using the link below.(next 3 months shown here)

[Education – The British Alpaca Society \(bas-uk.com\)](https://www.bas-uk.com/education)

### BAS Affiliate courses

BAS Approved

Saturday	3 <sup>rd</sup> Feb 24	Affiliate Course- Devon Modules 1, 2 & 3 <a href="http://www.clivewoodfarm.co.uk">www.clivewoodfarm.co.uk</a>
Saturday	17 <sup>th</sup> Feb 24	Affiliate Course- Herts Modules 1, 2 & 3 <a href="https://www.yewtreealpacas.co.uk/alpaca-events/courses-workshops">https://www.yewtreealpacas.co.uk/alpaca-events/courses-workshops</a>
Saturday	2 <sup>nd</sup> Mar 24	Affiliate Course- Devon Modules 1, 2 & 3 <a href="http://www.clivewoodfarm.co.uk">www.clivewoodfarm.co.uk</a>
Saturday	9 <sup>th</sup> Mar 24	Affiliate Course- Herts Modules 5 & 6 <a href="https://www.yewtreealpacas.co.uk/alpaca-events/courses-workshops">https://www.yewtreealpacas.co.uk/alpaca-events/courses-workshops</a>

Saturday	16 <sup>th</sup> Mar 24	Affiliate Course- Herts Modules 4, 7 & 6 <a href="https://www.yewtreealpacas.co.uk/alpaca-events/courses-workshops">https://www.yewtreealpacas.co.uk/alpaca-events/courses-workshops</a>
Saturday	23 <sup>rd</sup> Mar 24	Affiliate Course- Devon Modules 4 to 9 <a href="http://www.clivewoodfarm.co.uk">www.clivewoodfarm.co.uk</a>

Full details including description of module content:

[Education – The British Alpaca Society \(bas-uk.com\)](http://www.bas-uk.com)

If you would like your BAS, Educational or Regional group **event** included in this section (not shows) please send details to Duncan.



## Show Diary



Champions and Judges from National Show 2023

### Make a note in your diary!

(New information in red)

Breeders considering entering more than one fleece show may need the organisers of one show to forward the fleece(s) to the next show the fleeces are entered for. Please could entries to multiple fleece shows advise the organisers of the plan to ensure they know those entries need to be despatched asap to the next show. Please ensure that all the necessary entry forms are included in the box separately from the forms for the first shows.

Full [Shows information 2024 – The British Alpaca Society \(bas-uk.com\)](https://www.bas-uk.com/shows-information-2024)

## 2024

### BAS National Show 2024

Dates: 22nd, 23rd, 24th March 2024

Venue: Telford International Centre

Judges: Mary Jo Smith and Shane Carey

### **NWAG Alpaca Championships**

Date: Sat 6th April 2024

Entries Open: 12th Feb

Entries Close: 26th Feb

Max 175

Fee £22 + VAT

Venue: Borderway Mart, Carlisle, Cumbria.

Judge: Roger Clarke

### **Heart of England Spring Alpaca Fiesta**

Dates: Friday 12th, Saturday 13th and Sunday 14th April 2024

Venue: Bury Farm Equestrian Centre

Judge: Mrs. Julia Corrigan-Stuart

### **South of England Spring Live Alpaca Halter Show**

Dates: 20th and 21st April 2024

Venue: South of England Showground, RH17 6TL

Judge: Mr Rob Bettinson

Ring Steward: Mr Paul Wills

Organisers: Tony and Hilary Monkcom, [hilary@pinnaclealpacas.com](mailto:hilary@pinnaclealpacas.com)

26th and 27th April 2025

### **SCOTTISH ALPACA CHAMPIONSHIPS**

Dates: 27th and 28th April 2024

Venue: Lanark Ag Centre, ML11 9AX

Judge: Tim Hey

### **Devon County Show**

Dates: 16th, 17th and 18th May 2024

Venue: West Point, Clyst St Mary, EX5 1DJ

Judge: Tim Hey

### **Northumberland Championship Halter Show**

Dates: 25th May 2024

Venue: Hexham, NE46 3SG

Judge: Barbara Hetherington

### **Cornwall Fleece Show**

Dates: 20th July 2024

Venue: Carn Tremayne Farm, Praze, Cornwall, TR14 9PG

Judge: TBC

Organiser: Sandra Muriel

### **East of England Alpaca Fleece Show organised by EAG**

Dates: 16-18 August 2024

Venue: Essex Young Farmers, Chatham Green, Chelmsford, Essex CM3 3LQ

Judge: TBC

Organiser: Harley Laver

### **East of England Alpaca Halter Show organised by EAG**

Dates: 13th October 2024

Venue: Beechwood Equestrian Centre, Rettendon Common, Chelmsford CM3 8DY

Judge: TBC

Organiser: Harley Laver

